

matrixTM

GEL • SYSTEM

PRODUCT CATALOGUE



INTRODUCTION

Since its inception in 1988, Tulip Diagnostic (P) Ltd. comprising of eight independent diagnostic divisions, has emerged as a leading manufacturer and marketer of in vitro diagnostic reagents and kits, dehydrated culture media and high technology disinfectant products nationally and internationally.

Well known for its innovative approach, the company is owned, managed and run by highly involved professionals. The individual divisions are specialized in research, development and designing of specific systems and platforms in diverse technological areas covering almost all areas of diagnostic relevance. Tulip believes in creating 'Better systems for diagnosis and prevention' and sets trends by innovating continuously.

PRODUCT DEVELOPMENT

While Tulip Diagnostics (P) Ltd., focuses on assay systems for Immunohaematology, Hematology, Rheumatology, Infectious Diseases and Hemostasis, its Division Microexpress focuses on dehydrated culture media, bases, supplements, reagents and test kits for Microbiology and Mycobacteriology.

ORCHID BIOMEDICAL SYSTEMS, QUALPRO DIAGNOSTICS, ZEPHYR BIOMEDICALS focus on Rapid Membrane & ELISA based immunodiagnostic platforms for Fertility, Infectious Diseases, Parasitology, Cancer and Cardiac Markers.

CORAL CL/N/CAL SYSTEMS focus on Clinical Biochemistry while its division BIOSHIELDS focuses on high quality antiseptics & disinfectants.

MANUFACTURING

The products are manufactured in professionally set up modern facilities complying to relevant FDA guidelines.

The innovativeness is fueled by an inventive streak with an accent on indigenous technology as a fundamental basis for product development and designing of viable technological platforms for diagnosis. Production systems have been devised around process flows to achieve consistent product performance, batch to batch and stringent in coming, in process QA ensure adherence to expected performance parameters whereas finished QC benchmarked to standard reference materials ensures accuracy of products.

QUALITY ASSURANCE

The company apply cGMP and GLP in force time to time and all the companies are ISO 13485: 2016 compliant. Most products are already CE marked.

HUMAN RESOURCES

The company places great importance to talent garnering and skill development. Inhouse training programmes are conducted at desired frequency to develop functional proficiency, understanding processes and imparting knowledge. Tulip Group team is motivated to be responsible and responsive to its customers and business.

NATIONAL SALES

The company's national business is built around 12 branch locations nationwide with product flow all over the country through a diverse and efficient distributor network that guarantees product availability, maintenance of cool chain and customer responsiveness.

The company has a professional sales team of around 400 sales / service professionals headquartered all over the country to carry forward its customer contact and sales program; with a customer base of over 20000 customers and 350 distributors.

INTERNATIONAL PRESENCE

Internationally the company channelizes its products and technology through Distributors, NGOs & arrangements with other international companies globally.

The company also offers bulk, OEM and contract manufacturing facilities to various international companies. Currently, the company exports its products to over 87 countries worldwide, representing over 45% of its turnover.

OPPORTUNITIES FOR COLLABORATION

The company is constantly seeking distribution partners in unrepresented countries.

It also seeks competent vendors for various bio-materials, chemicals and instrumentation used in its manufacturing processes.

The company also seeks collaboration with like-minded companies who are looking to commercialize their products and technologies in India utilizing Tulip Group's deep resources and understanding of the Indian & International business environment.

MatrixTM Gel System based on Column Agglutination Technology is developed and manufactured by Tulip Group of Companies in India. Matrix Gel System is designed to meet day to day requirements of immunohematology laboratories. Matrix Gel System product catalogue gives you complete information about Matrix Gel Cards, reagents and consumables. It also covers the details of instruments used in Matrix Gel System. We hope you will find this product catalogue exciting and informative.



Matrix[™] Forward & Reverse Grouping Card with Autocontrol



Matrix[™] Forward Grouping Confirmation Card



Matrix[™] Neonate Group Card



Matrix[™] AHG (Coombs) Test Card



Matrix[™] Coombs Anti-IgG Card



Matrix[™] Direct Antiglobulin Test Card



Matrix[™] Neutral Gel Card



Matrix[™] Coombs and Neutral Gel Card



Matrix[™] Forward Grouping DAT Card



Matrix[™] Forward Grouping and Crossmatch Card



Matrix[™] ABO Sub Grouping Card Anti-A₁



Matrix[™] ABO Sub Grouping Card Anti-H



Matrix[™] Rh Phenotype Card with Anti-D



Matrix[™] Rh Phenotype Card with Anti-K



ABO/Rho(D) Forward & Reverse Grouping Card with Autocontrol

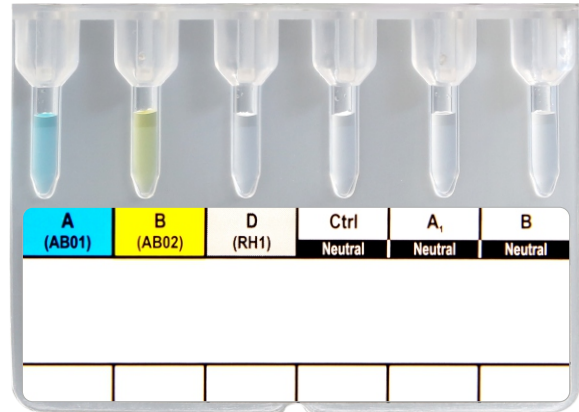
Product Name : Matrix™ Forward & Reverse Grouping Card with Autocontrol

Description : For determination of ABO and Rho(D) blood group systems and reverse grouping for confirmation of ABO grouping. Contains monoclonal Anti-A, Anti-B and Anti-D (VI-) with neutral gel.

Configuration : A-B-D-Ctrl-A₁-B / One profile per card.

Catalogue No. : 10260024

Pack Size : 24 Cards



ABO/Rho(D) Forward Grouping Confirmation Card

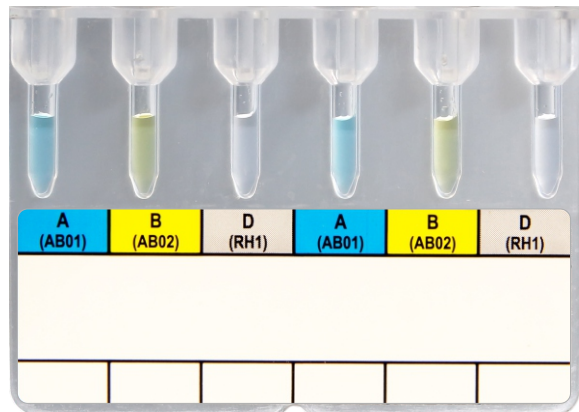
Product Name : Matrix™ Forward Grouping Confirmation Card

Description : For confirmation of ABO and Rho(D) blood group systems. Contains monoclonal Anti-A, Anti-B, Anti-D (VI-).

Configuration : A-B-D-A-B-D / Two profiles per card.

Catalogue No. : 10255024

Pack Size : 24 Cards



ABO/Rho(D)/AHG Neonate Group Card

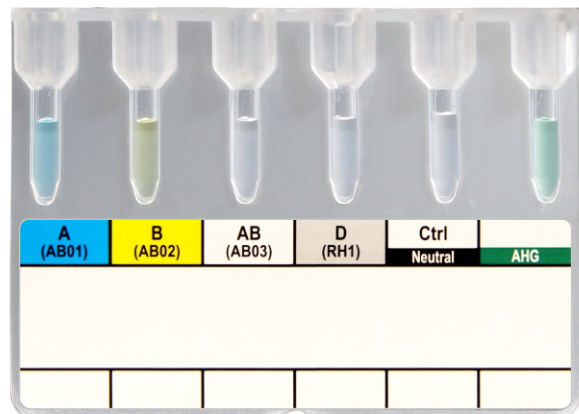
Product Name : Matrix™ Neonate Group Card

Description : For determination of ABO and Rho(D) status and direct Coombs test of neonates. Contains monoclonal Anti-A, Anti-B, Anti-A,B, Anti-D (VI-) and polyspecific Coombs (Anti-IgG+Monoclonal Anti-C3d).

Configuration : A-B-AB-D-Ctrl-AHG / One profile per card.

Catalogue No. : 10259024

Pack Size : 24 Cards





AHG (Coombs) Test Card

Product Name	: Matrix™ AHG (Coombs) Test Card
Description	: For direct Coombs test (DAT) and indirect Coombs test (IAT) including antibody screening, antibody identification and compatibility testing. Contains polyspecific Coombs reagent (Anti-IgG+Monoclonal Anti-C3d).
Configuration	: 6 x AHG / Profiles per card depends on test parameter.
Catalogue No.	: 10256024
Pack Size	: 24 Cards



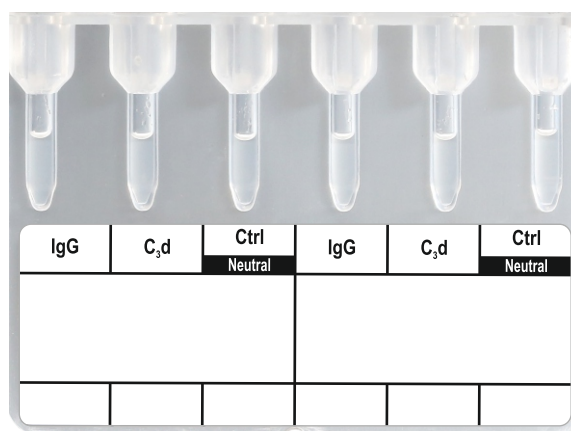
Coombs Anti-IgG Card

Product Name	: Matrix™ Coombs Anti-IgG Card
Description	: For all Coombs test where anti complement activity is not required, like direct Coombs test and indirect Coombs test including antibody screening, antibody identification and compatibility testing. Weak D testing can be done using Matrix™ Anti-D IgG. Contains monospecific Coombs (Anti-IgG).
Configuration	: 6 x Anti-IgG / Profiles per card depends on test parameter.
Catalogue No.	: 102660024
Pack Size	: 24 Cards



Direct Antiglobulin Test Card

Product Name	: Matrix™ Direct Antiglobulin Test Card
Description	: For Direct Coombs Test (DAT) along with differential detection of IgG and C3d activity on red blood cells. Contains Anti-IgG and Anti-C3d with neutral gel.
Configuration	: IgG-C3d-Ctrl- IgG-C3d-Ctrl/ Two profiles per card.
Catalogue No.	: 102670024
Pack Size	: 24 Cards





Neutral Gel Card

Product Name	: Matrix™ Neutral Gel Card
Description	: For saline and enzyme phase tests including antibody screening, antibody identification, compatibility testing and ABO reverse grouping. Contains neutral gel.
Configuration	: 6 x Neutral Gel / Profiles per card depends on test parameter.
Catalogue No.	: 102740024
Pack Size	: 24 Cards



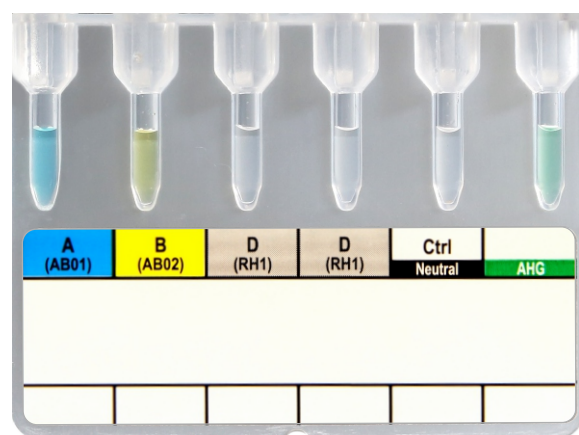
Coombs and Neutral Gel Card

Product Name	: Matrix™ Coombs and Neutral Gel Card
Description	: Combination of Coombs and Neutral Gel can be used for multiple applications. It can be used for Antibody screening in AHG and Enzyme phase or Compatibility testing in AHG and Enzyme / Saline phase. Contains polyspecific Coombs (Anti-IgG+Monoclonal Anti-C3d) and Neutral gel.
Configuration	: 3 x AHG - 3 x Neutral Gel / Profiles per card depends on test parameter.
Catalogue No.	: 102640024
Pack Size	: 24 Cards



Forward Grouping DAT Card

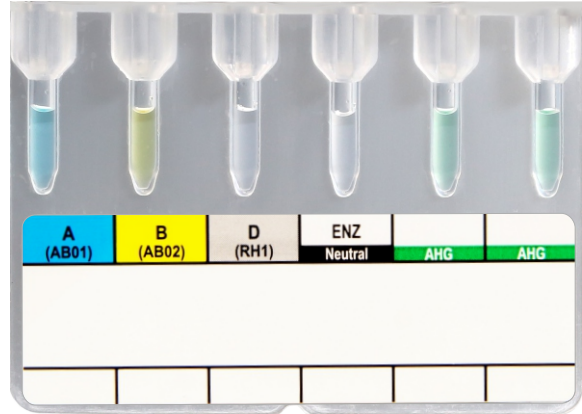
Product Name	: Matrix™ Forward Grouping DAT Card
Description	: For detection of ABO and Rho(D) blood group systems using two different clones of Anti-D in separate microtubes and direct Coombs test (DAT). Contains monoclonal Anti-A, Anti-B, Anti-D (VI-) and polyspecific Coombs (Anti-IgG+Monoclonal Anti-C3d).
Configuration	: A-B-D-D-Ctrl-AHG / One profile per card.
Catalogue No.	: 102730024
Pack Size	: 24 Cards





Forward Grouping and Crossmatch Card

Product Name	: Matrix™ Forward Grouping and Crossmatch Card
Description	: For confirmation of ABO and Rho(D) blood group systems for both patient and donor, ABO and Rho(D) compatibility testing, major crossmatch in Coombs and enzyme phase along with Coombs phase autocontrol for the patient. Contains monoclonal Anti-A, Anti-B, Anti-D (VI-) and polyspecific Coombs (Anti-IgG+Monoclonal Anti-C3d).
Configuration	: A-B-D-ENZ-AHG-AHG / One profile per card.
Catalogue No.	: 102650024
Pack Size	: 24 Cards



ABO Sub Grouping Card Anti-A_i

Product Name	: Matrix™ ABO Sub Grouping Card Anti-A _i
Description	: For determination of A subgroups and confirmation of group A _i . Contains Anti-A _i Lectin.
Configuration	: 6 x Anti-A _i / Six profiles per card.
Catalogue No.	: 102750024
Pack Size	: 24 Cards



ABO Sub Grouping Card Anti-H

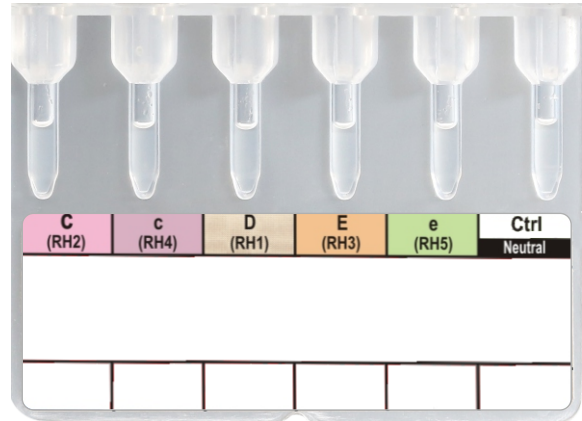
Product Name	: Matrix™ ABO Sub Grouping Card Anti-H
Description	: For detection of H antigen. The H antigen is present on all human red cells except those with phenotype O _i , i.e. Bombay blood group. Contains Anti-H Lectin.
Configuration	: 6 x Anti-H / Six profiles per card.
Catalogue No.	: 102760024
Pack Size	: 24 Cards





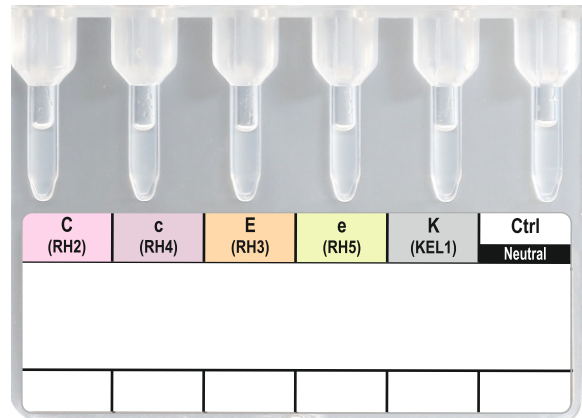
Rh Phenotype Card with Anti-D

Product Name	: Matrix™ Rh Phenotype Card with Anti-D
Description	: For determination of antigens of Rh system. The Rh phenotype determination is important for previously transfused patients, patients with irregular antibodies and during pregnancy. Contains monoclonal Anti-C, Anti-c, Anti-D (VI-), Anti-E, Anti-e with neutral gel.
Configuration	: C-c-D-E-e-Ctrl / One Profile per card.
Catalogue No.	: 102630024
Pack Size	: 24 Cards



Rh Phenotype Card with Anti-K

Product Name	: Matrix™ Rh Phenotype Card with Anti-K
Description	: For determination of antigens of Rh and Kell blood group system. Contains Anti-C, Anti-c, Anti-E, Anti-e, Anti-K with neutral gel.
Configuration	: C-c-E-e K-Ctrl/ One profile per card.
Catalogue No.	: 102810024
Pack Size	: 24 Cards





MatrixTM Octoplus Complete Grouping Card



MatrixTM Octoplus Forward and Reverse Grouping Card with Subgrouping





Octoplus Complete Grouping Card

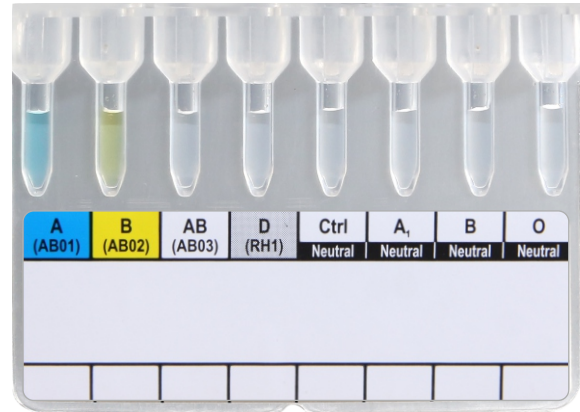
Product Name : Matrix™ Octoplus Complete Grouping Card

Description : 8 microtube gel card for determination of ABO and Rho(D) blood group systems and reverse grouping. Contains monoclonal Anti-A, Anti-B, Anti-A,B, Anti-D(VI-) with neutral gel.

Configuration : A- B- A,B- D- Ctrl- A1- B- O/ One profile per card

Catalogue No. : 102820024

Pack Size : 24 Cards



Octoplus Forward and Reverse Grouping Card with Subgrouping

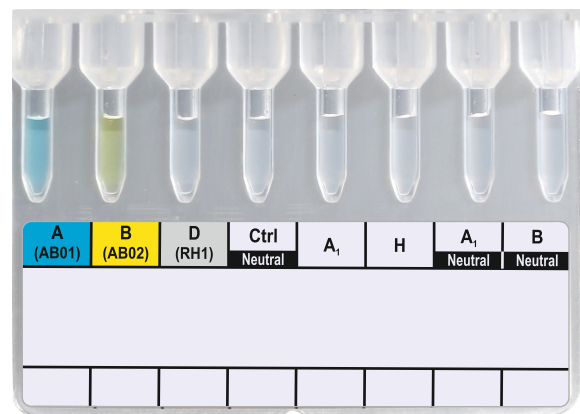
Product Name : Matrix™ Octoplus Forward and Reverse Grouping Card with Subgrouping

Description : 8 microtube gel card for determination of ABO and Rho(D) blood group systems and reverse grouping along with subgrouping. Contains monoclonal Anti-A, Anti-B, Anti-D(VI-), Anti-A1 Lectin, Anti-H Lectin with neutral gel.

Configuration : A- B- D- A1- H- Ctrl- A1- B / One profile per card.

Catalogue No. : 102560192

Pack Size : 24 Cards





Matrix[™] Diluent-2 LISS



LYOPAP[™]



Matrix[™] Anti-D IgG



AGTROL[™]



ERYWELL[™]



Matrix[™] ERYGEN - RG



Matrix[™] ERYGEN - PO



Matrix[™] ERYGEN-AS



Matrix[™] ERYGEN-ID



Matrix[™] ContaVoid



Matrix[™] Octoplus ContaVoid



Diluent - 2 LISS

Product Name : Matrix™ Diluent-2 LISS

Description : For preparation of red cell suspensions used on Matrix™ gel system.

Catalogue No. : 10257250 / 102570500

Pack Size : 250ml / 500ml



LYOPAP

Product Name : LYOPAP™

Description : Lyophilized papain for serological applications on Matrix™ Gel System and classical tube technique.

Catalogue No. : 102500061

Pack Size : 6 x 1 ml



Anti - D IgG

Product Name : Matrix™ Anti-D IgG

Description : Monoclonal Anti-D IgG in a standardized concentration for weak D testing on Matrix™ Coombs Anti-IgG Card in Matrix™ Gel System.

Catalogue No. : 102790005

Pack Size : 5 ml





AGTROL

Product Name : AGTROL

Description : Standardized monoclonal Anti-D IgG solution for preparation of Coombs control cells for Matrix[™] Gel System and classical tube techniques. Also contains red cell preservative solution to store prepared Coombs control cells.

Catalogue No. : 10252010

Pack Size : 10 ml



ERYWELL

Product Name : ERYWELL[™]

Description : Red cell preservative solution for enhanced preservation of red cells, for onsite preparation of cell panels for reverse grouping, Antibody screening & Identification.

Catalogue No. : 10253020

Pack Size : 20 ml



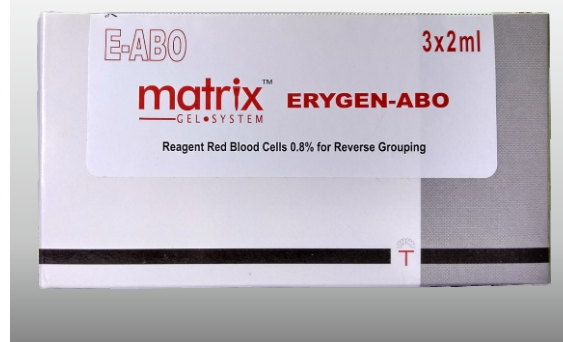
Erygen ABO

Product Name : Matrix[™] Erygen ABO

Description : 0.8% red blood cell suspension of A1, B and O cells for reverse grouping in Matrix[™] Gel System.

Catalogue No. : 102070032

Pack Size : 3 x 2 ml





ERYGEN- PO

Product Name : MatrixTM ERYGEN-PO

Description : 0.8% Pooled 'O' reagent red blood cells for antibody screening in MatrixTM Gel System.

Catalogue No. : 102700015

Pack Size : 1 x 5ml



ReaCell I, II, III

Product Name : ReaCell I, II, III

Description : 0.8% reagent red blood cell panel for antibody screening in MatrixTM Gel System.

Catalogue No. : IOTH-0240

Pack Size : 3 x 5ml



ReaCell Panel

Product Name : ReaCell Panel

Description : 0.8% reagent red blood cell panel for antibody identification in MatrixTM Gel System.

Catalogue No. : IOTH-0241

Pack Size : 11 x 5ml





ContaVoid

Product Name : Matrix[™] ContaVoid

Description : Disposable devices for piercing the aluminium foil seal of Matrix[™] gel cards to avoid contamination of reagents while opening the foil seal & secure sample pipetting.

Catalogue No. : 102770100

Pack Size : 100 Nos.



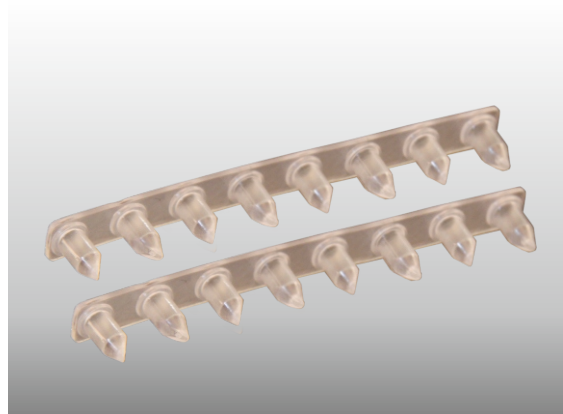
Octoplus ContaVoid

Product Name : Matrix[™] Octoplus ContaVoid

Description : Disposable devices for piercing the aluminium foil seal of Matrix[™] Octoplus gel cards to avoid contamination of reagents while opening the foil seal & secure sample pipetting.

Catalogue No. : 102830100

Pack Size : 100 Nos.





Matrix[™] QAS Level-I



Matrix[™] QAS Level-II





QAS Level-I

Product Name : Matrix[™] QAS Level-I

Description : 0.8% suspension of red blood cell sensitized with IgG immunoglobulin for Quality Assurance testing of Anti-human globulin and AHG related procedures in Matrix[™] Gel System.

Catalogue No. : 102780001

Pack Size : 2 ml



QAS Level - II

Product Name : Matrix[™] QAS Level-II

Description : Standardized, lyophilized monoclonal Anti-D IgG in specified concentration for Quality Assurance of reagents and techniques related to Matrix[™] Gel System and classical tube technique.

Catalogue No. : 102780002

Pack Size : Kit content :
0.5 ml Anti-D and 10 ml 6% BSA





Matrix[™] Card Centrifuge



Matrix[™] Card Warmer



Matrix[™] Work Station



Matrix[™] Bottle Top Dispenser



Matrix[™] Sample Dispensing Pipette



Matrix[™] Micropipette Tips



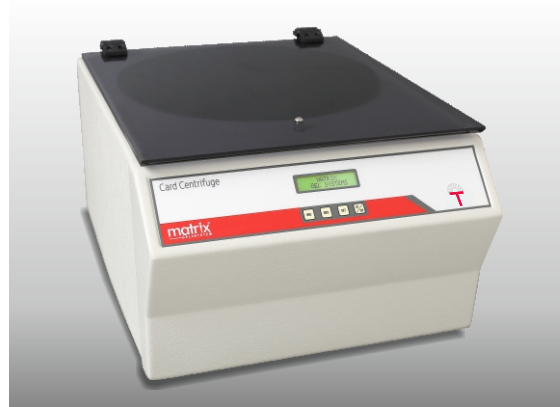


CARD CENTRIFUGE

Product Name : Matrix™ Card Centrifuge

Description : Microprocessor controlled gel card centrifuge for controlled centrifugation of Matrix™ gel cards having 24 cards capacity.

Catalogue No. : CC-2400 (24 Cards)



CARD WARMER

Product Name : Matrix™ Card Warmer

Description : Incubator for gel cards with prefixed temperature at 37 C and having capacity of 24 Matrix™ gel cards. Two independent programable timers with audible alarm provides flexibility to incubate gel cards in two batches.

Catalogue No. : CW-2400

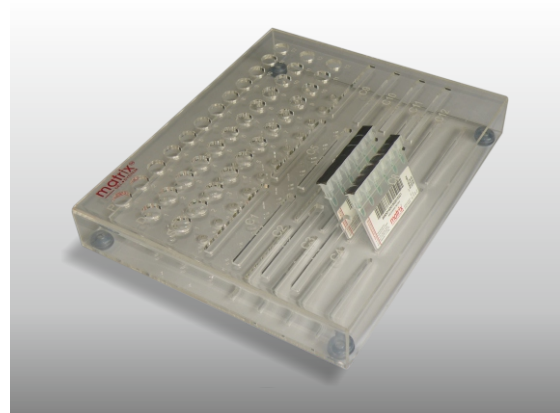


WORK STATION

Product Name : Matrix™ Work Station

Description : Table top work station for Matrix™ gel cards. Specially designed for systematic arrangement of Matrix™ gel cards and sample or red cell dilution tubes.

Catalogue No. : WS-1200.





BOTTLE TOP DISPENSER

Product Name : MatrixTM Bottle Top Dispenser

Description : Bottle top dispenser for dispensing MatrixTM Diluent-2 LISS directly from the bottle, having range from 0.2 to 2.0 ml.

Catalogue No. : BD-5250



SAMPLE DISPENSING PIPETTE

Product Name : MatrixTM Sample Dispensing Pipette

Description : MatrixTM Sample Dispensing Pipettes with fixed Volume 10 μ l, 25 μ l and 50 μ l and one variable volume 5-50 μ l.

Catalogue No. : MP-0010
MP-0025
MP-0050
MPV-0550



MICROPIPETTE TIPS

Product Name : MatrixTM Micropipette Tips

Description : Micropipette tips for MatrixTM Sample Dispensing Pipette.

Catalogue No. : PT-0296





Electronic Pipette

Product Name : MatrixTM Electronic Pipette

Description : Electronic pipette having range from 5-120 μ l for dispensing cell suspension and serum/ plasma into Matrix gel cards.

Catalogue No. : MEP- 5120



Matrix Card Reader

Product Name : Matrix Card Reader

Description : Semi automated card reader for Reading, Interpretation and Documentation of Matrix gel Card results. Operated through Matrix ProScan Software and compatible with 6 and 8 microtube Matrix gel cards.

Catalogue No. : CR-6800



MatrixTM Gel System with standard accessories contains :

- | | | |
|----------|---|---|
| 1 | Matrix TM Card Centrifuge | 1 No. |
| 2 | Matrix TM Cartridge Warmer | 1 No. |
| 3 | Matrix TM Work Station | 1 No. |
| 4 | Matrix TM Bottle Top Dispenser | 1 No. |
| 5 | Matrix TM Sample Dispensing Pipettes | 4 Nos. (10µl, 25µl and 50µl fixed & 5-50µl variable volume) |
| 6 | Matrix TM Micropipette Tips | 2 Boxes of 96 tips each |



Distributed by:



orchid



Microexpress



Viola

For further information contact :



TULIP DIAGNOSTICS (P) LTD.



Gitanjali, Tulip Block, Dr. Antonio do Rego Bagh, Alto Santacruz, Bambolim Complex Post Office, Goa - 403 202, INDIA.
Tel.: +91 832 2458546-50 **Fax :** +91 832 2458544 **E-mail :** sales@tulipgroup.com **Website :** www.tulipgroup.com

For the use of a registered medical practitioner or a Hospital or a laboratory only. Refer package insert before use.

MATRIX/CAT708-18/VER-3